

Pittsford BF 019-3(59) US Route 7 over Furnace Brook



EXISTING BRIDGE DEFICIENCIES

Inspection Rating Information (Based on a scale of 9)

Bridge Deck Rating	5 Fair
Superstructure Rating	5 Fair
Substructure Rating	6 Satisfactory

Rating Definitions

9 Excellent
8 Very Good
7 Good
6 Satisfactory
5 Fair
4 Poor
3 Serious
2 Critical
1 Imminent Failure

Deficiencies

- Deck and Superstructure deterioration
- Narrow shoulders on and approaching the bridge
- The bridge railing is substandard

Traffic Data

	“Current Year” 2017	“Design Year” 2037
Average Annual Daily Traffic	9,800	10,400
Design Hourly Volume	1,100	1,200
Average Daily Truck Traffic	810	1,200

Beam and Deck Deterioration



Pier deterioration



Pavement and Joint Deterioration



Bridge Deck Looking South



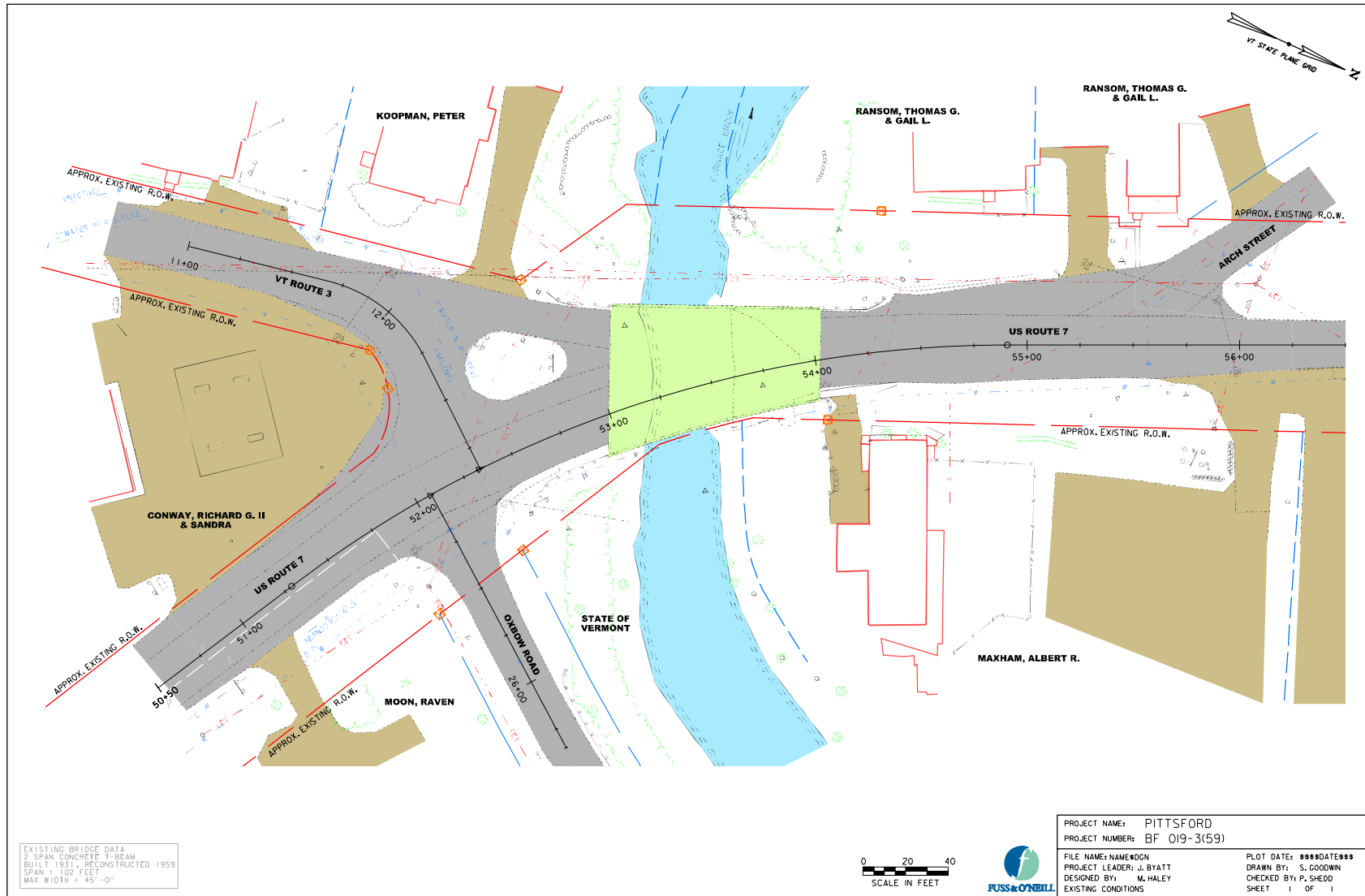
Bridge Deck Looking North



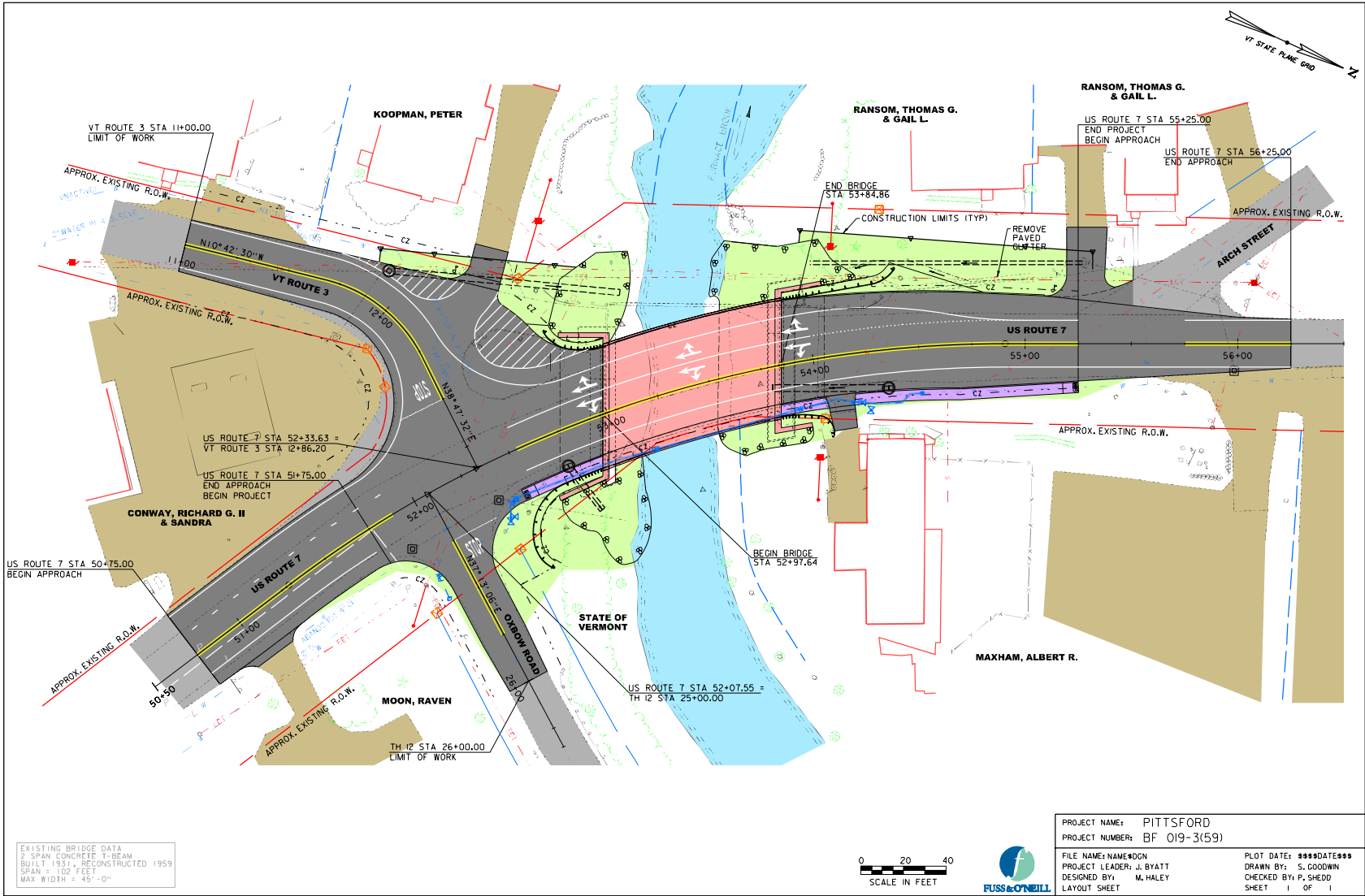
Proposed Changes

- Single Span Bridge – removing pier
- Reducing span from 102 ft.to 84 ft.
- Increasing shoulder widths
- Removing “slip” lane to Route 3

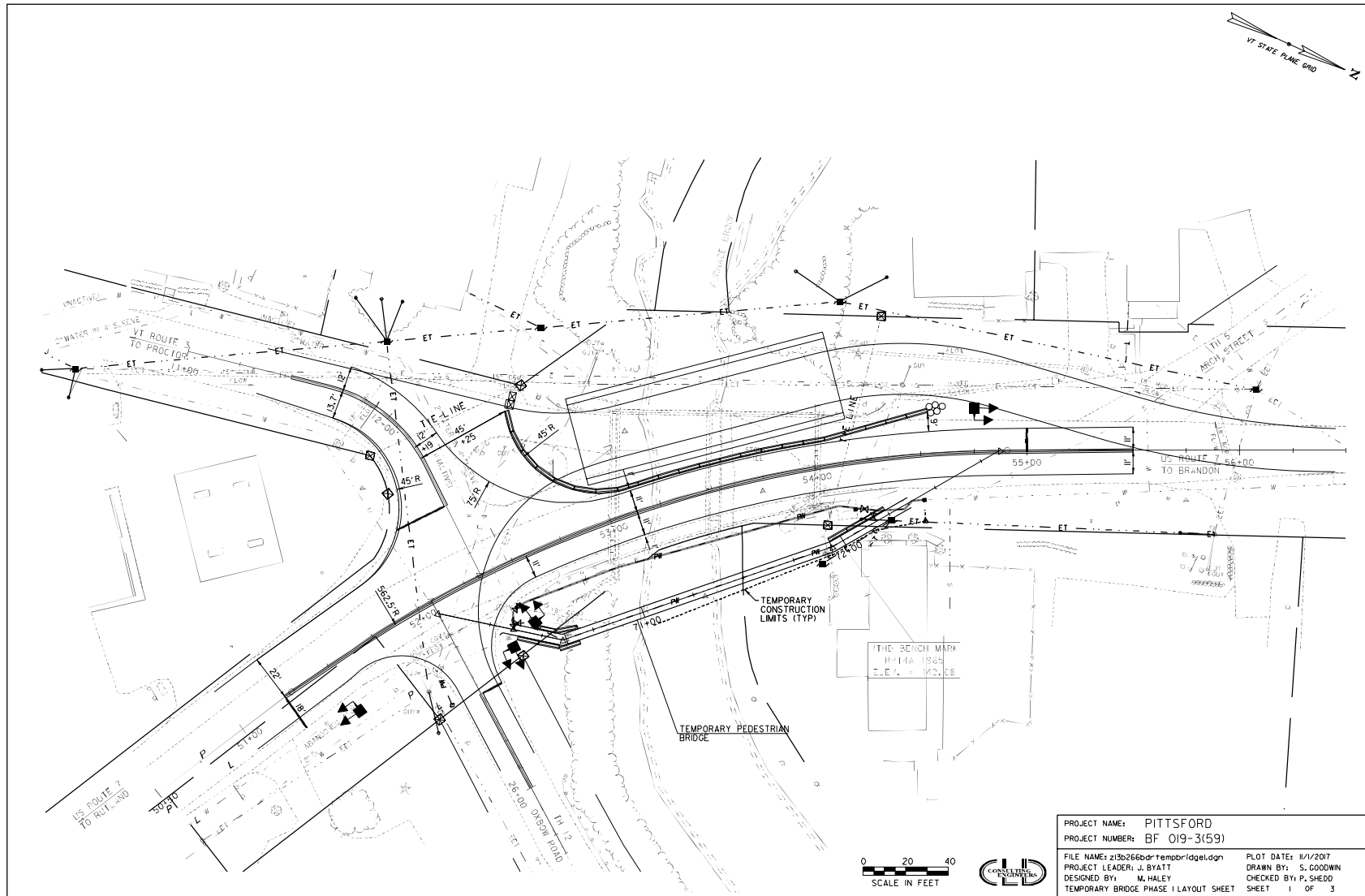
Existing Conditions



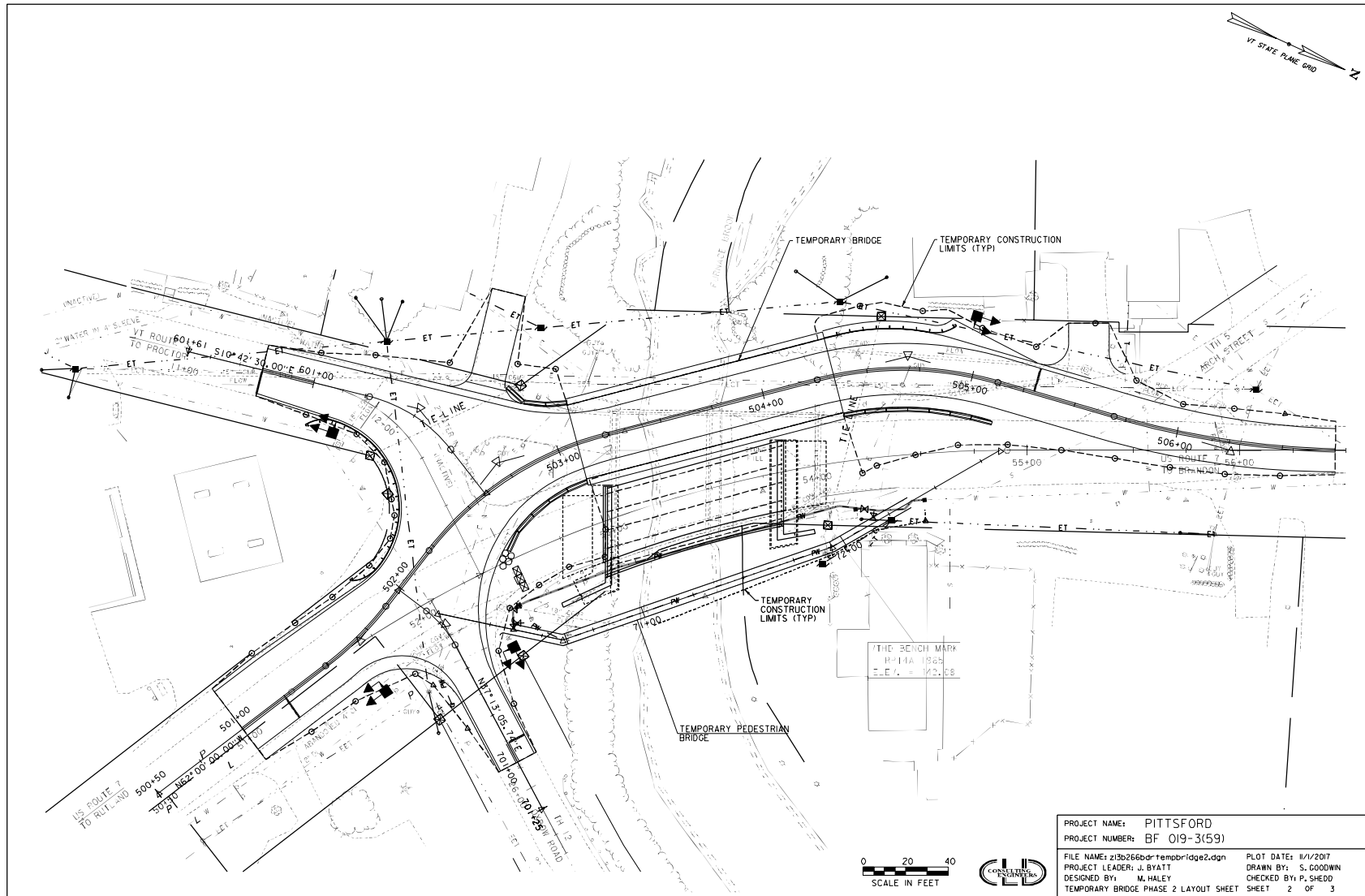
Final Bridge Layout



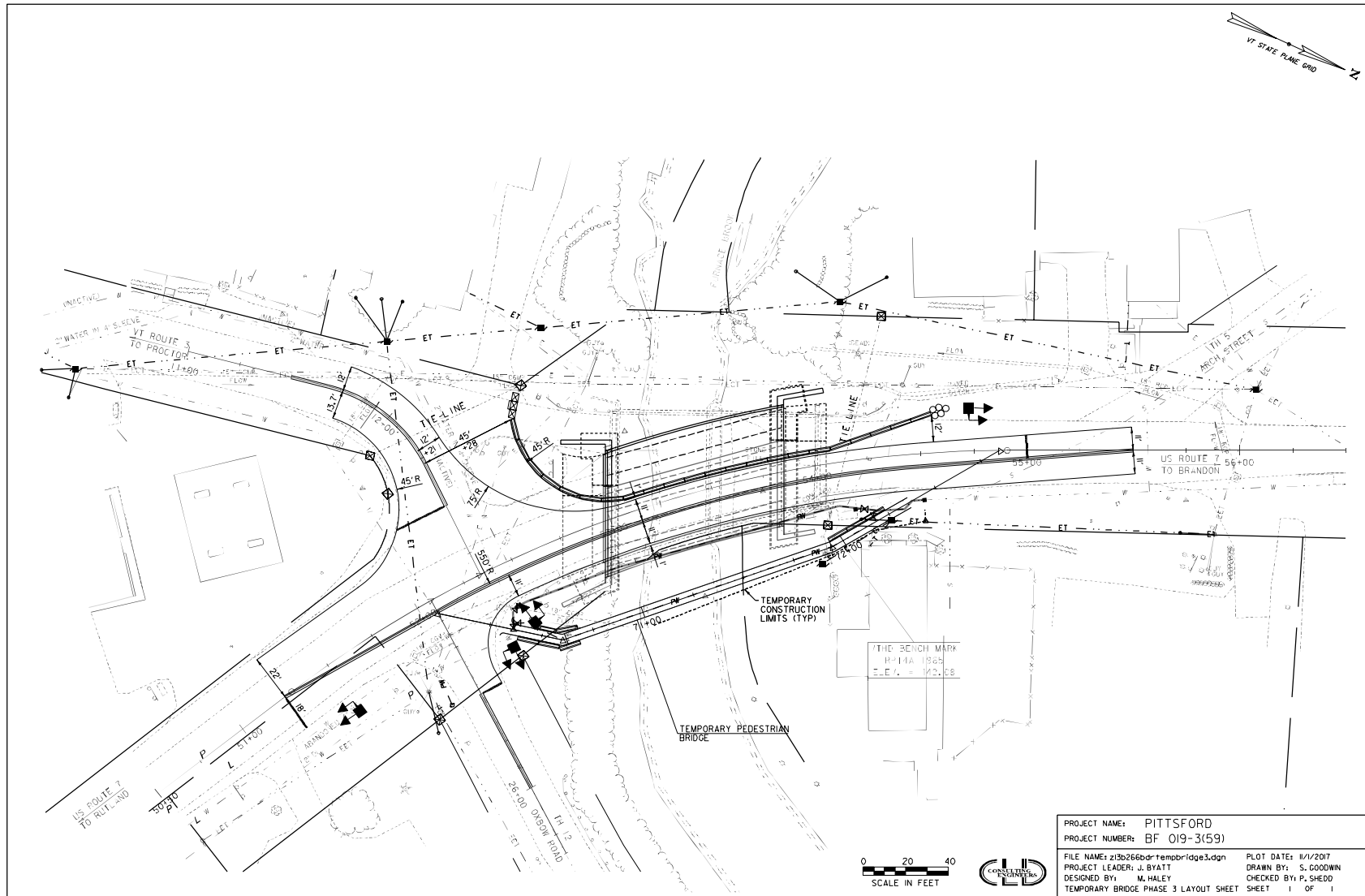
Construction Phasing



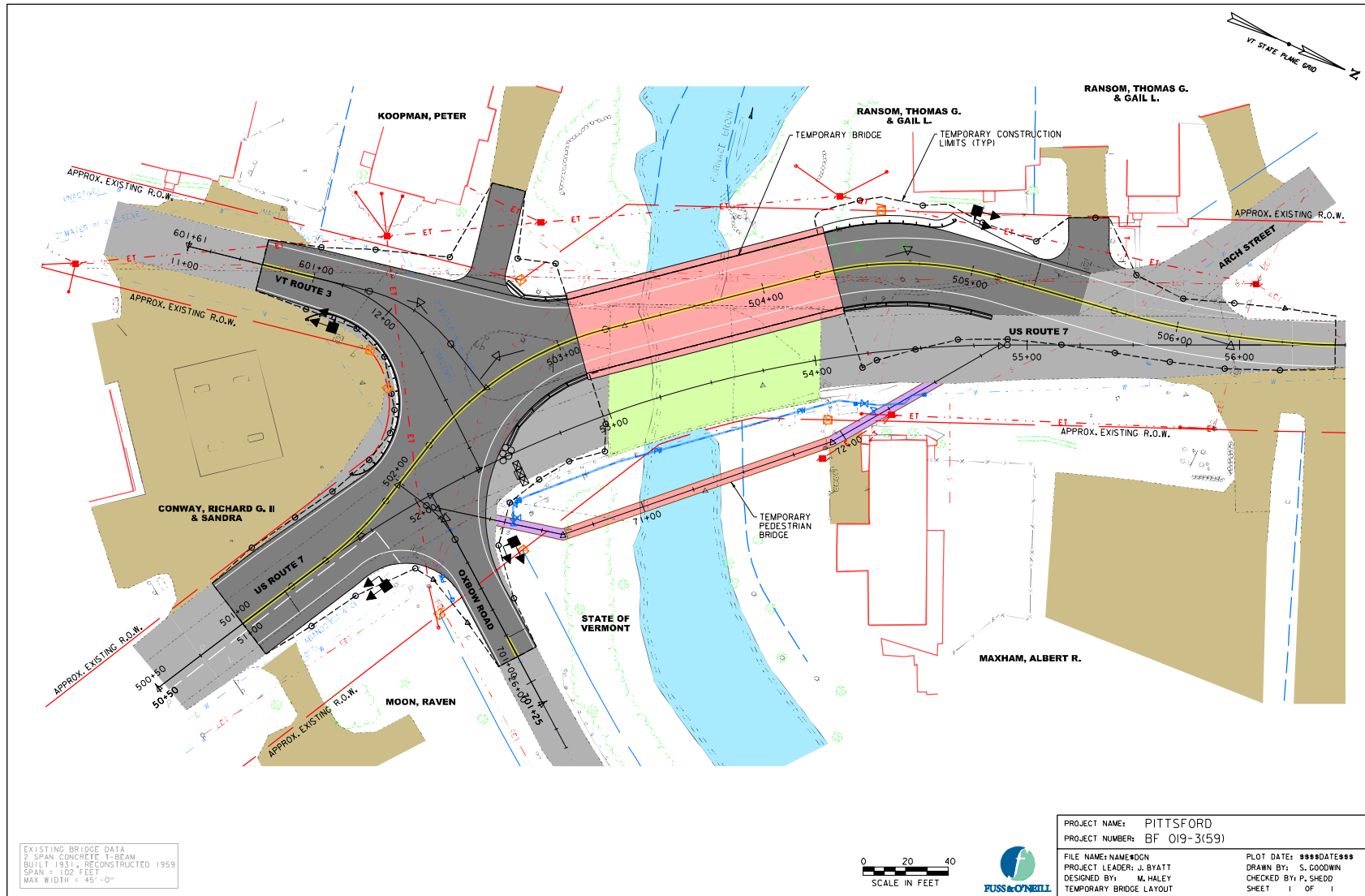
Construction Phasing



Construction Phasing



Temporary Bridge Layout



Questions

